

Classic  
**Straight**



Como  
**Skinny**



Gramercy  
**Tapered**



Sylvia  
**High Rise Super Skinny**



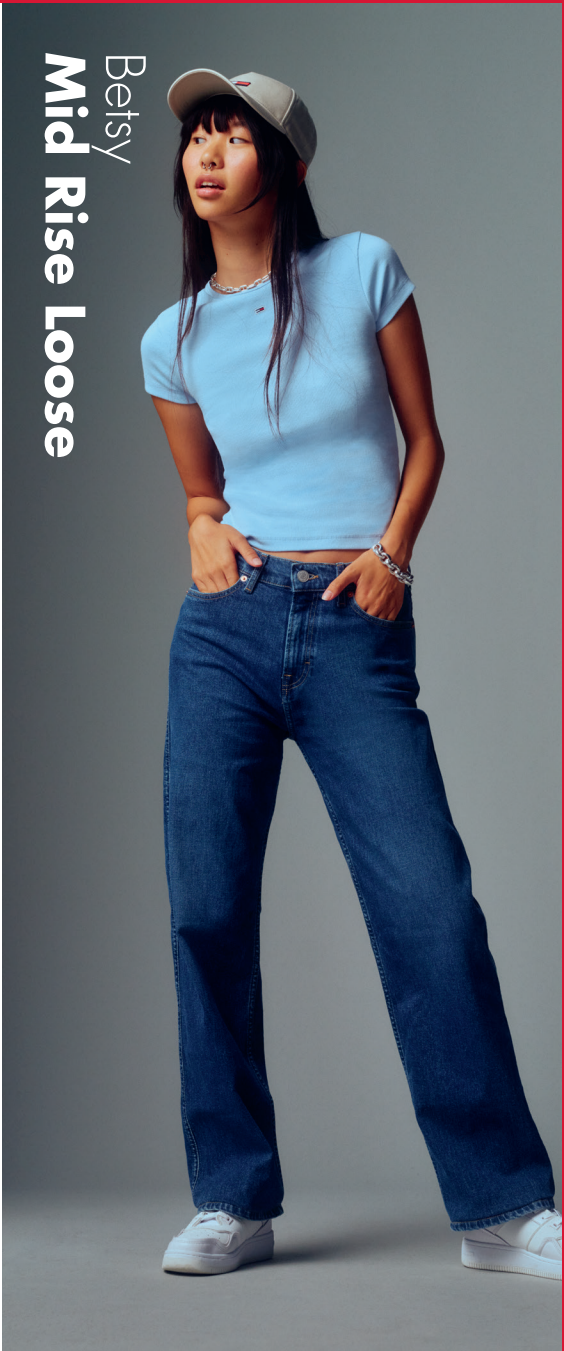
Harlem  
**Ultra Skinny**



Nora  
**Mid Rise Skinny**







Betsy  
Mid Rise Loose



Lizzie  
High Rise Slim Ankle



Mom Jean  
Ultra High Rise Tapered



Wide Leg  
High Waist



Claire  
High Rise Wide



Bootcut  
Regular Waist





Betsy  
Mid Rise Loose



Lizzie  
High Rise Slim Ankle



Wide Leg  
High Waist



Claire  
High Rise Wide



Gramercy  
Tapered



Como  
Skinny



Nora  
Mid Rise Skinny



Harlem  
Ultra Skinny



Mom Jean  
Ultra High Rise Tapered



Bootcut  
Regular Waist



Classic  
Straight



Sylvia  
High Rise Super Skinny



Gramercy  
**Tapered**



Lizzie  
**High Rise Slim Ankle**



Betsy  
**Mid Rise Loose**



Como  
**Skinny**



Wide leg  
**High Waist**



Claire  
**High Rise Wide**



Nora  
**Mid Rise Skinny**



Classic  
**Straight**



Mom Jean  
**Ultra High Rise Tapered**



Bootcut  
**Regular Waist**



Harlem  
**Ultra Skinny**



Sylvia  
**High Rise Super Skinny**







Izzie  
**High Rise Slim Ankle**

Izzie is ultra comfortable with its straight leg and ankle length.





**Not your mom's jeans, our Mom Jean sits high on the hip with tapered legs.**

**Mom Jean**  
**Ultra High Rise Tapered**



Betsy  
**Mid Rise Loose**



**Betsy's 90s  
inspired fit  
features a loose,  
straight leg and  
comfy mid rise.**



Claire  
**High Rise Wide**



A fresh take on  
a 90s shape,  
Claire has a  
fitted high waist  
and wide legs.



Sylvia  
**High Rise Super Skinny**



**Sylvia's super  
skinny fit and high  
rise flatter your  
shape in the best  
way possible.**



# Nora Mid Rise Skinny



Someone say icon?  
Our go-to mid rise  
skinny fit, Nora  
always serves in  
comfort and style.



**Classic**  
**Straight**



**A modern classic.  
High-rise with  
a snug fit on  
your hips and a  
straight leg.**



Grammercy  
**Tapered**



**A vintage touch.  
High-rise with a  
looser thigh and  
a slim tapered  
leg that ends at  
the ankle.**



Como  
**Skinny**



**Your favorite  
skinny pair. Super  
stretch in a comfy  
mid-rise with a  
slender leg.**





Bootcut  
**Regular Waist**

**Your sleek bootcut. Mid-rise, snug with stretch and a leg that gradually flares out.**



Wide Leg  
**High Waist**



**A classic returns.  
High-rise, snug  
at the top with a  
wide leg.**



Harlem  
**Ultra Skinny**



**All-day comfort.  
Form-fitting with  
added elasticity,  
higher-rise and an  
ultra skinny leg.**